

## How to Set up Your PowerFlamer Stir Fry Stove with Electronic Ignition (Propane Gas)

The PowerFlamer stir fry stove enables highest power propane gas cooking in your home backyard. Setting up the PowerFlamer stir-fry stove is quick and easy. However, **EXERCISE EXTREME CAUTION** and apply common sense -- you are dealing with **GAS** and **FIRE** here. Treat your PowerFlamer stir-fry stove the same way as you would with your gas-powered cook-top stoves, in addition to following instructions because of its much higher power capacity. To know when to stop increasing power to your new PowerFlamer stove, please watch the video "How to know when to stop increasing power to a PowerFlamer propane/natural gas 160/120 stove?" on this link <https://outdoorstirfry.com/support/product-documentation/>.

### CAUTION

Our product installation guide evolves since year of 2002. Inevitably there are pictures of our old generations in this guide. Please use it as a guide when you unpack your new stove.

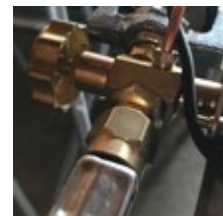
1. Unpack your stove. The stove comes as separate pieces for ease of shipping, with a ring (main) burner mounted on a base plate, a wind guard with wok ring adaptor, a hose/regulator assembly.



2. For some stoves a black knob for ignition switch might be detached to protect from damage during shipping. Push the knob back to the front of the ignition switch.



3. Entire hose and regulator assembly might also be detached for ease of shipment. Attach the empty hose end (remove sealing tape if any) to the stove burner inlet (remove its black rubber cap if any) and tighten the hose end swivel hex nut on the inlet (hand tighten then 1/2 turn by wrench). Pictures on the right are before and after assembling the hose to the stove.



4. The PowerFlamer stove consists of a long pipe burner and a wind guard. The wind guard and base plate might be loosened to ease shipping. They should be fastened by tightening all associated bolts and nuts.



There are 3 wind guard positions with respect to the burner pipe (front). Before tightening the bolt/nut sets between the wind guard and the burner base plate, rotate the wind guard to suit your desired cooking position. The long handle of your wok needs to be shielded by the widest wind guard top area.



Wind guard position 1 – wok handle on the front



Wind guard position 2 – wok handle 120° to the right



Wind guard position 3 – wok handle 120° to the left

5. (**Needed for long leg version**) If you purchase a long leg version, it should also come with long legs and their adaptors.



6. (**Needed for long leg version**) Sometime for shipping it is necessary to detach the long leg extensions. In this case, please slide the adaptors to both long legs and the short legs from the burner base plate. Tighten the screws. Alternatively, please watch the video “How to achieve stable long legs for PowerFlamer propane 160 stoves” on our website link <https://outdoorstirfry.com/support/product-documentation/>.



7. If the brass valve assembly is loose and rotating, use a wrench to tighten the two nuts (shown on right picture) to lock on the burner pipe inlet.



8. **(Needed for long leg version)** The assembled long leg PowerFlamer stove should look like the one on the right.



9. Examples on how to use the set of long leg stabilizers



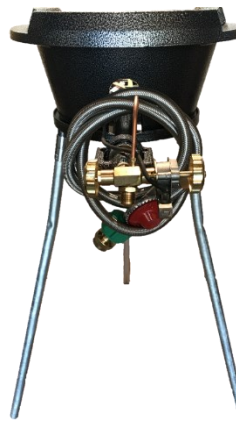
10. Examples on how to set a short leg version stove into the stand and to stabilize the stand with heavy objects on its lower shelf.





11. **(For configurable version)** If you purchase a configurable stove, the adaptor to connect to a throwaway propane bottle should have been tied (but not installed) to the high-pressure regulator. The pictures on the right show how to install onto the regulator and connect to a throwaway propane bottle. Skip steps 9 and 10 below.

In case that you like to use a 20lbs propane tank, unscrew the bottle adaptor off to expose the original regulator connector and follow steps below fully (do not skip 9 and 10).



12. Tightly screw the high pressure regulator connector into the propane tank. Sometimes it might be hard for the hex copper fitting to push open the tank valve. An adjustable wrench or a plumbing wrench is needed to tighten it even further.



ACME Type I QCC connector clockwise tighten to tank

13. Turn on the propane gas supply from the tank. There is no need to adjust the high pressure regulator.



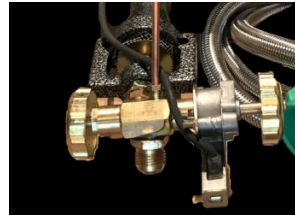
Some of the new regulators such as the one on the right have gas leak protection feature. Before turning on the top propane tank valve, make sure the stove brass valves (left and right on burner pipe) are off. After turning on the propane tank valve, the regulator should give two clicking sounds (about 10~60 seconds apart). To be safe, it is better to wait for more than 1 minute after turning on the propane tank valve. Only after hearing the second clicking sound, the stove valves can be turned on. If stove valve is turned on before the regulator 2<sup>nd</sup> clicking sound, the regulator can go into protection mode, either shutting gas off or reducing gas out flow.



In case the regulator goes into protection mode, please turn off the propane tank valve and turn on the left brass valve on the stove to release all gas built into the regulator before retrying.

If after retrying, the stove still does not have full power, it is possible that somewhere in the stove system has developed a leak. Typically, a continuing hissing sound somewhere after the regulator (hose, valve area) might be a sign.

Please only use the knob or valves in front of the stove for power adjustment. *Some knobs can only be turned 90 degrees counterclockwise. Excessive turning or turning to wrong direction may permanently damage the igniter head.*



14. With all connections leak proof, start testing the PowerFlamer stoves by
1. (PF13xxx160EI, top figure on right)) Turn the right valve counter-clockwise for ignition; once ignited, turn the left valve counter-clockwise for main burner heat; turn off right valve (clockwise and tight) after main burner flame is on.
  2. (PF13xx160IEI, like bottom figure on right) Push and turn the front switch fully 90 degrees counterclockwise. you should hear gas hissing sound, a clicking sound followed by gas ignition flamer to the stove rings.



For PF13xx160IEI the front knob needs to be pushed in, turned fully counterclockwise and then clockwise to adjust to your desired heat level. Releasing the knob (not push in anymore) will stop the ignition flame for PF13xx160IEI. For PF13xx160EI stoves you should turn back the right valve clockwise to stop the ignition flame. You can adjust the burner heat by

1. (PF13xxx160EI) the left valve
2. (PF13xx160IEI) front knob (clockwise to lower heat).

**Caution!** Since the ignition flamer travels above the stove to the burner rings, there should not be any flammable materials close to or under the stove. It is recommended to maintain at least one foot (1') clearance to the stove.

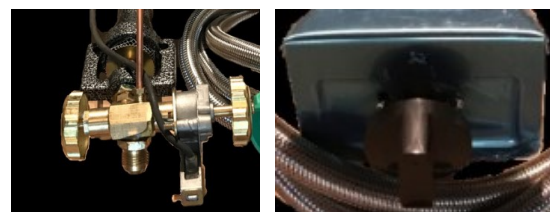
15. When you ignite a PowerFlamer stove, you might need to ignite a few times to expel air out of the ignition copper tube. Electronic ignition fails over time due to weather aging. In case a proper ignition can't be achieved, the main burner can still be ignited by a manual long arm BBQ ignitor (lighter).



16. To adjust air-gas mixture for correct flame, rotate the air shutter wheel in front of the burner pipe.



17. To turn off the stove after use,
  1. (PF13xx160EI) turn off both valves (left and right)
  2. (PF13xxx160IEI) turn the front knob (clockwise) to its top position. The flame on the burner rings should die out.
  3. **Shut off the valve on top of the propane tank** or unscrew the propane bottle for configurable version. This is important for the regulator not to withstand tank pressure all the time.



18. **Important!**  
If you ever smell propane gas during use, shut down the stove by turning the front knob or valves to its top position and disconnecting the stove from propane tank. Start checking gas leaks. Fix before use.


The stove exterior can become extremely hot during your cooking and right after use, please refrain from touching it.





Surface under the stove should resist high temperature (metal surface is recommended).

If you have any questions, please email [Support@OutdoorStirFry.com](mailto:Support@OutdoorStirFry.com).  
For product updates, product offers, cooking recipes and tips, and other useful information, please visit our website <https://www.OutdoorStirFry.com>.

Specifications and designs of the products displayed herein are subject to change without notice.

## Trouble Diagnosis

	Problem Description	Possible Reasons
1	The stove ignition does not ignite the main burner.	<p>Possible Cause #1: The gas pressure from regulator might be low. The ignition flame does not travel far enough to reach the main burners. Please use a manual igniter as below.</p>  <p>Possible Cause #2: The ignition head may not produce spark for ignition due to aging. Please use a manual igniter as the picture below.</p>

		
2	<p>The stove produces yellow flame like picture below:</p> 	<p>Possible Cause #1: Check the air shutter if it is fully closed, like the picture below:</p>  <p>Air Shutter. Rotate it out to let air to mix with propane fuel!</p> <p>Possible Cause #2: The top plate of the burner should be placed like below:</p>  <p>Otherwise, yellow flame and/or intermittent flame off.</p>